
RCPennantScorer v3.3.0

This program has been developed by Gerard McCarthy of ES&CTTA.

Website: <http://gmcttsoftware.com/rcpennantscorer/>

Email: gmctt@tpg.com.au

This program is a companion to RCPennantSubmitter.

This program links to a dropbox used by RCPennantSubmitter; it gets the fixture data from dropbox and uploads the scores for a match to dropbox so RCPennantSubmitter may collect the scores.

Licence

There is no warranty for RCPennantScorer. RCPennantScorer is provided “as is”, without warranty of any kind, either express or implied, including, but not limited to, the implied warranties of merchantability or fitness for a particular purpose. The entire risk as to the quality and performance of RCPennantScorer is with you. In no event will we be liable to you for damages, including any general, special, incidental or consequential damages arising out of any use of RCPennantScorer or out of any inability to use RCPennantScorer.

Table of Contents

Licence 1

Table of Contents 2

First Use - Brief Overview 3

Setup Info 4

Pennant: Select Season Info 6

Pennant: Add Players Info..... 7

Pennant: Add Team Players Info 8

Pennant: PreferredGradeTeam Info 9

Pennant: Enter Match Scores Info..... 10

General Info..... 14

First Use - Brief Overview

(see the help sections on each screen for full details which are included after this overview.)

Setup: Set the RCPennantData folder path on first use and click Reload to access the folder data.

Setup: Enter the Scorer name and save it.

Setup: Paste in the DropBoxCode from the club/score manager and save it.

Setup: Enter email settings and save them

Setup: Import Files from DropBox.

Pennant: Select Season.

Pennant: Add Players: if there are any new players joining after the season starts.

Pennant: Add Team Players: can be used to add players to teams after the season starts. Don't use this for substitutes, only players joining the team.

Pennant: PreferredGradeTeam: can be used to set default grade and teams for EnterMatchScores.

Pennant: Enter Match Scores: save the scores and then Send Match Scores to dropbox or by email to the results manager.

Setup Info

RCPennantData

The RCPennantData folder stores all the data for the program. The path is saved to a ConfigSettings.txt file in the program folder. The RCPennantData folder can stay in the RCPennantScorer folder or may be placed elsewhere to suit usage. For instance, the RCPennantData folder could be placed online in a OneDrive account. Click **Set RCPennantData Folder Path** and choose a folder named RCPennantData.

Then click **Reload** so the program loads the settings that it normally does on launching the program.

If the RCPennantData folder is placed in a shared location, such as OneDrive, then it may be important to make sure that only one person at a time is accessing the RCPennantData folder.

RecheckUsers can be clicked to list such users that have a program open that accesses the same RCPennantData folder.

Auto Open Pennant Scores

Check **Auto Open Pennant Scores** to automatically open the program at the score entry screen.

Scorer Name

Enter the Scorer name and save it by clicking **Save Scorer Name**.

DropBox

The Administrator of RCPennantSubmitter provides the code, preferably by email so it can be copied.

Click **Paste DropBoxCodeForScorers from Clipboard** to paste in the code.

Click **Save DropBox Settings** to save the code.

Email

Choose the email method:

Check **User's Default Email Program** to use the default mail application on the computer. Each email then has to be manually sent from that application.

Check **Built In Email** to have the email sent directly from RCPennantSubmitter. The SMPT settings must be filled in for this.

Enter the email settings for this:

Enter the **Manager Email Address**. This is the email address of the manager of RCPennantSubmitter.

Enter the **Scorer Email Address**. This is the email address of the user of RCPennantScorer.

Enter the **SMPT server**. This is the pop server address based on the one you have set in your email program.
e.g. mail.tpg.com.au

Enter the **SMPT port**. This should be 25. Other values such as 587 or 2525 might work if 25 fails.

Check the **Use Authentication** box to require the email username and password that you have set in your email program. It should be checked.

Enter the **SMPT Username** that you have set in your email program.

Enter the **SMPT password** that you have set in your email program.

Click **Save Email Settings** to save the email settings.

MatchData Transfers

Import the MatchData and MatchDataSettings folders for the season.

Click **Import Files From DropBox** to import the fixture for the season so that the scores can be entered.

Click **Import Finals From DropBox** to import the finals fixture for the season so that the scores for the finals can be entered.

Clear DropBox Status clears the record of DropBox activity.

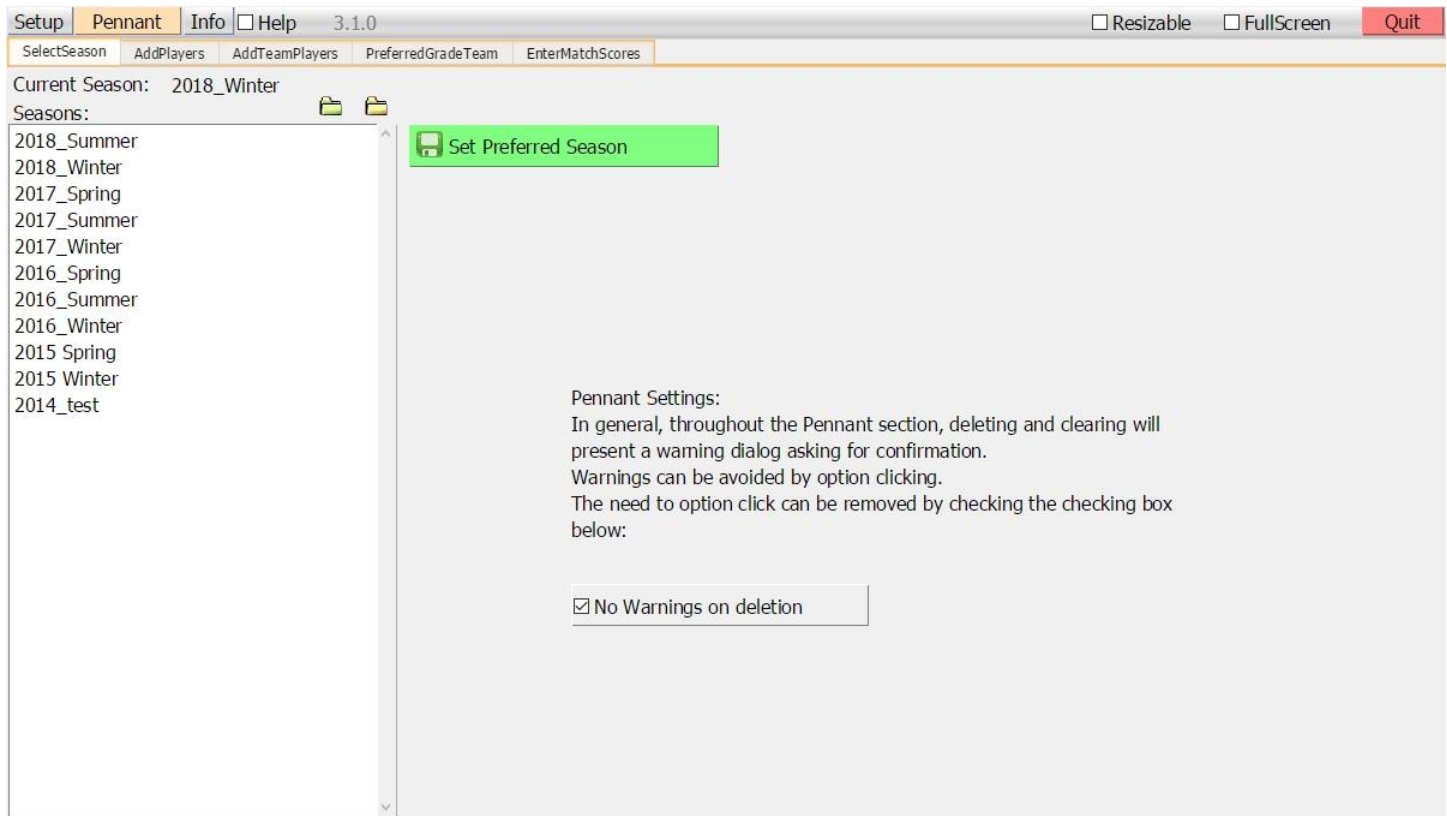
Check **Use DropBox Log** to record details of the DropBox activity in the Log field.

Clear Log clears the record of Log.

Use **Email Match to Score Manager** to email to the Manager Email address the current match data displayed on Pennant: MatchScores.

Clear Email Status clears the record of Email activity.

Pennant: Select Season Info



SelectSeasons: Choose the current season.

Set the Current Season

Select the Season in the Seasons field for adding players, adding players to teams and entering match data.

Set Preferred Season

Click **Set Preferred Season** to save the chosen season so it is automatically selected on reopening the program.

Pennant: Add Players Info

Setup Pennant Info Help 3.1.0

SelectSeason AddPlayers AddTeamPlayers PreferredGradeTeam EnterMatchScores

Current Season: 2018_Winter

Players:

Baker, Broderick
Bender, Corey
Bowman, Robert
Boyer, Ronan
Brooks, Danny
Cochran, Braydon
Cuevas, Stanley
Cuny, Issac
David, Chad
Davis, Emilio
Dunn, Bruce
Espinoza, Conor
Freeman, Collin
Galvan, Jasiah
Gardner, Gary
Harding, Javon
Hickman, Jaydin
Hill, Frank
Hoffman, Elias
Holder, Kylan
Ingram, Jadiel
Lamb, Markus
Larson, Brenton
Lee, Jimmy
Livingston, Skylar
Lyons, Adam
McCann, Erik
Melan, Lane

New Player:

Clear

Add Player to Player List

Player to delete:

Clear

Delete Player from Player List

Paste Players From Clipboard

Copy Players To Clipboard

Clear Players

AddPlayers: Add to the base list of Players.

Add Player to Player List

Type in a new player, with surname first then first name with a comma and space separating them.

Delete Player from Player List

Select a player to delete him or double click them.

Clear (New Player & Player to Delete)

Both the New Player and Player to Delete fields can be cleared.

Paste Players From Clipboard

A list of Players stored elsewhere can be pasted directly without the need to add one player at a time. Duplicates will be removed.

Copy Players To Clipboard

The Players can be copied to the clipboard for use elsewhere.

Clear Players

The Player list can be cleared entirely by clicking Clear Players.

A warning dialogue will be shown asking for confirmation.

Pennant: Add Team Players Info

The screenshot shows the 'Pennant' software window with the 'Info' tab selected. The 'Current Season' is set to '2018_Winter'. The 'Grades' list on the left includes A1, A, B, and C. The 'Grade Teams' list is empty. Below these are fields for 'Selected Grade' and 'Selected Team'. The 'Players' list on the left includes names like Baker, Broderick, Bender, Corey, Bowman, Robert, Boyer, Ronan, Brooks, Danny, Cochran, Braydon, Cuevas, Stanley, Curry, Issac, David, Chad, Davis, Emilio, Dunn, Bruce, Espinoza, Conor, Freeman, Collin, and Calum, Daniel. The 'Selected Player' field shows 'Alberico, Kelly'. Below this are buttons for 'Add Player to Team' (green), 'Delete Player From Team' (red), and a list of substitutes: 'Substitute, Temp1' through 'Substitute, Temp8'. To the right of the substitutes is a 'Team Players' list, which is empty. Below the 'Team Players' list are buttons for 'Move Up', 'Move Down', 'Clear Team' (red), 'Paste Team From Clipboard' (green), and 'Copy Team To Clipboard' (blue). A 'Find' button is located at the bottom left of the 'Players' list.

AddTeamPlayers: Add Players to a team for the selected season.

Select the grade and team to edit the player list for the team.

Click on a player and click **Move Up** or **Move Down** to set their standard order.

Fill-ins and substitutes may be added to the team once the season begins.

Add Player to Team

Select a Player to add to the team.

Click in the Player list and type the first letters of the surname to scroll to the player.

Double click the player to add them to the Team.

Delete Player From Team

Select a Player to remove him from the team. Double click the player to remove them from the Team.

Substitutes

Click a Substitute to add them to the team.

Clear Team

The Team Player list can be cleared entirely by clicking Clear Team.

Paste Team From Clipboard

A list of Players can be pasted directly without the need to add one player at a time. Duplicates will be removed.

Copy Team To Clipboard

The Players can be copied to the clipboard.

Pennant: PreferredGradeTeam Info

Setup Pennant Info Help 3.1.0 Resizable FullScreen Quit

SelectSeason AddPlayers AddTeamPlayers PreferredGradeTeam EnterMatchScores

Current Season: 2018_Winter

Grades:

- A1
- A**
- B
- C

Grade Teams:

- EP Wildcats
- EP Lions
- EP Cheetahs
- EP Panthers
- EP Pumas
- EP SnowLeopards**
- EP Leopards
- Bye A

Selected Grade: A

Selected Team: EP SnowLeopards Clear Team

Set Preferred Grade Team

Clear Preferred Grade Team

PreferredGradeTeam: Set the grade and team to be used as defaults in EnterMatchScores.

Select the grade and team to use as defaults in EnterMatchScores.

Only fixtures with the preferred Team will be shown in the fixture drop down.

Click Set Preferred Grade Team to save the preferred Grade and Team.

On the Enter Match Scores screen check the Preferred Grade Team checkbox to apply the preferred Grade and Team so that they are used on navigating to Enter Match Scores.

Pennant: Enter Match Scores Info

Setup Pennant Info Help 3.3.0 Resizable FullScreen Quit

SelectSeason AddPlayers AddTeamPlayers PreferredGradeTeam EnterMatchScores

Current Season: 2019_Summer Rounds: 1 2 3 4 5 6 7 8 9 10 QF SF Latest
 Match Template: Grade: Fixture: 11 12 13 14 15 16 17 18 All PF GF Finals Preferred Grade Team
 95_2D_bestof5 C C-1_Tue 05 Feb_SP Red v HighwayMen Results Files Only

Home Players: Auto Clear Away Players: Auto Clear

Baker, Broderick
 Bender, Corey
 Bowman, Robert
 Boyer, Ronan
 Brooks, Danny

HomeSubs: AwaySubs:

Games: 1 3 5 7 Auto Winner Enter = next match Smart Tab Create Match Change Players Swap Copy Paste Encoded

Baker, Broderick	10	5	11	10	12	11	3	12	Baker, Broderick		
Bender, Corey	9	11	11	11	11	6	9	8	Bender, Corey		
Bowman, Robert	11	11	11		8	7	6		Bowman, Robert		
Baker, Broderick; Bender, Corey	11	11	11		6	5	9		Baker, Broderick; Bender, Corey		
Bender, Corey	8	8	4		11	11	11		Baker, Broderick		
Baker, Broderick	11	11	13		5	3	11		Bowman, Robert		
Bowman, Robert	11	11	7	8	11	9	5	11	11	2	Bender, Corey
Baker, Broderick; Bowman, Robert	11	9	11	11		8	11	3	9		Baker, Broderick; Bowman, Robert
Bender, Corey	11	11	14		6	3	12				Bowman, Robert
Bowman, Robert	11	7	11	9	2	9	11	9	11	11	Baker, Broderick
Baker, Broderick	9	3	11	16	11	11	11	9	14	2	Bender, Corey

Clear Scores Clear Match Calculate Result Save Match Scores Send Match Scores Dropbox Email

EnterMatchScores: Create the match score sheet by choosing the player order. Scores are entered manually.

Select a Match

Select a **Grade** (and the paired Match Template will be automatically selected), a **Round** via the option buttons and a **Grade Fixture match** then select the **playing order** for the teams.

Check the **Preferred Grade Team** checkbox to apply the preferred Grade and Team.

Check the **Results Files Only** checkbox to list save match scores for the Grade taking into account and preferred team settings and any round choices.

Selecting a **Grade** places the fixture in the Grade Fixture drop menu (and selects the paired Match Template) which if filtered according to the round option button selected. The previous (up) and next (down) grade triangle buttons select the previous and next grade from the Grade drop menu.

Selecting a match from the **Grade Fixture** drop menu lists the Home players and Away Players in the order saved on the TeamPlayers screen. The previous and next match triangle buttons select the previous and next match from the Grade Fixture drop menu.

If Match scores have already been saved they will be shown and can be edited and resaved.

Home Players and Away Players

Click Auto to place the players with the 3 singles players in the order listed and the doubles filled with players 1 & 2 then 1 & 3, or if there are two players, with the 2 singles players in the same order and the doubles filled with players 1 & 2.

Click Clear to clear the player selections.

Click the radio buttons or the player slot to control where the player name is placed when it is clicked.

Click on the player names in the Home or Away lists in the desired order to set the singles order.

The 4 lower radio buttons are for doubles; the first two for a first doubles match and the last two for a second doubles match.

Click on a placed player name to remove them.

Click HomeSubs or AwaySubs to select a substitute for the match. Any player can be chosen. Anonymous Substitutes can be used and they will be filtered out on the RCEventReports: EventMatchData page when preparing to submit results to Rating Central in RCPennantSubmitter.

Typing a letter in the HomeSubs or AwaySubs menus filters for names beginning with that letter. Space or return or enter will restore the menu.

Substitute players are temporarily added to the Home and Away players list when choosing a player from the HomeSubs or AwaySubs menus.

Option clicking a player in the Home and Away players list temporarily removes them.

Clicking on a player team slot, will temporarily add the player to the relevant Home team or Away team list.

Create Match

The Match Template and the chosen players are used to Create the Match Score sheet.

Change Players

Click Change Players to apply any changes made to the players while keeping the Match Scores. Save Match Scores to keep the changes.

Shift click a player in the scoresheet to manually alter the player(s).

Swap

This may be useful when scorers have inadvertently entered players or scores on the wrong side of the scoresheet.

It may also be useful when competitions allow coin tosses to decide home teams in finals.

Click **Swap:Players** to swap Home and Away players in the scoresheet. Separate saving is required.

Click **Swap:Scores** to swap Home and Away scores in the scoresheet. Separate saving is required.

Click **Swap:Both** to swap the Players and Home and Away scores between home and away teams. Matches will be reordered to align with match template. Separate saving is required.

Click **Swap:Fixture** to swap the teams, players and scores and the home and away teams in the fixture. Matches will be reordered to align with match template. This swap will be saved to the fixture (in the season folder of the MatchDataSettings folder). If there is a match scores file (in the MatchData folder) it will be deleted and a new file with the new fixture entry will be saved.

Swaps (Both, Fixture) involving both players and scores will attempt to reorder the matches to align with the match template. If the match template is not fully reversible, the matches will not be reordered and a warning message to that effect will be displayed.

Enter Match Scores

Choose the number of games for a match: 1, 3, 5 or 7. The screen will be adjusted to only show the required number of score boxes.

Check Auto Winner to automatically enter scores of 11 or 12 in the opponent's scores when the entry is a score of 10 or less.

Check Enter = Next Match so that the Enter key or Return key moves the insertion point for typing to the first score box for the next match. Leaving it unchecked causes the Enter and return keys to move the insertion point to the opponents corresponding score box.

Press arrow keys or the tab key or click in the score fields then type in the game score.

Use arrow keys or the tab key to navigate through the scores fields.

Smart Tab

The Smart Tab feature is designed to reduce key presses to a minimum while using just one key to control score entry navigation.

Unchecking the Smart Tab check box will cause the tab key to navigate through the scores fields in order just like the arrow keys. Shift - tab will reverse the direction.

Check the Smart Tab check box to allow swapping to the opponent for score entry as well as automatically going to the next match if the match has been won.

If using the Smart Tab feature, just enter the losing scores. The winning scores will be done automatically (including scores above 10).

Consider the match scores: 9,11,11,8,7 v 11,5,4,11,11.

The key presses required will be 9 **tab** **tab** 5 tab 4 **tab** **tab** 8 tab 7 tab.

With Smart Tab checked, when the tab key is pressed in an empty score field, the cursor is moved to the matching score field for the opponent.

With Smart Tab checked, when the final losing score is entered and the match is won/lost, the cursor is moved to the first score field for the next match.

For matches with different number of games, such as 5 for singles and 3 for doubles, use the down arrow key to move to the next match after entering scores for the doubles. Check Enter = Next Match to use the Enter key to do this as well.

Forfeits

Option click a forfeiting player in the scoresheet to place the forfeits.

Alternatively, enter an "f" in the score boxes of each game for a player forfeiting.

For a match that is best of 5 games, enter f in the first three score boxes (i.e. three times)

Games (1 for each f) and games points (11 for each f) are allocated to the teams for the forfeited match.

Incomplete team matches

Leave the scores empty for individual matches if team matches are incomplete.

Calculate Result

Clicking Calculate Result to add up all the scores. This is useful for checking with manual scoresheets.

If an error is found in a match the player names will be in red.

Clear Match Scores

Clicking Clear Match Scores to empty the Match Score sheet of all scores.

Save Match Scores

Clicking Save Match Scores to save the Match Scores.

The save icon will change - a tick will be shown to indicate that scores were saved.

Copy MatchData (To Clipboard)

The Match Scores can be copied to the clipboard for use elsewhere.

Check the Encoded checkbox to also include the url encoded copy of the matchscores.

This ensures that the tab characters are preserved when using email programs that use plain text emails.

Send Match Scores

Check the Dropbox check box. The Match Scores are uploaded to Dropbox for RCPennantSubmitter.

Check the Email check box. The Match Scores are emailed according to the settings on the Setup screen.

The screen is changed to the Setup screen so that the sending status and log can be viewed.

Pennant Settings

The settings are automatically saved for the Current Season, Grade, MatchTemplate, Round, Games setting, AutoWinner, EnterKey and Smart Tab.

On re-using the program these settings will be automatically restored.

General Info

SetupPennantInfo3.2.0

☐ Resizable☐ FullScreenQuit

ManualVersionCheck

This Version: 3.2.0

Go to Downloads<http://gmcttsoftware.com/downloads/>

Downloads Latest Version: 3.2.0

Go to Features and Version History<http://gmcttsoftware.com/rcpennantscorer/>

Installation Instructions:

Download the zip file and extract it (Control click: Extract All) to a folder of your choosing.

Upgrading:

After downloading and extracting, copy the application file (.exe in Windows, .app in MacOS) into the RCPennantScorer folder replacing the previous version.

Version History:

3.2.0 Oct 7 2018
Links to Website updated.
In Pennant:EnterMatchScores, added the swap button to swap scores or both players and scores.
In Pennant:EnterMatchScores, added erasers to clear individual match scores.
In Pennant:EnterMatchScores, added separate buttons to clear scores or the full match scores with players.
In Pennant:EnterMatchScores, limited round buttons to 18 rounds; longer fixtures require use of All to display matches in dropdown.
In Pennant:EnterMatchScores, added QF and PF finals buttons.
In Pennant:EnterMatchScores, reformatted round and finals buttons.
In Pennant:EnterMatchScores, option click the template drop button to apply the template even if there are scores saved for the current fixture match.
In Pennant:EnterMatchScores: only option clicking a forfeiting player in the scoresheet places the forfeits.
In Pennant:EnterMatchScores: now shift clicking a player in the scoresheet allows manual editing of the player(s).

3.1.0 Jun 2 2018

Check for updates with VersionCheck which is done on opening the screen.